



TeleType GPS Technical Note

7" Truck Navigation GPS Unable to Find Navigation Software

Follow the instructions below to set the proper path to find the navigation software in the case where the message “NOT FIND NAVIGATION SOFTWARE” appears.

FYI – this may happen if the system is totally discharged or if the user initializes the system.

Note: Before following this procedure, please check to see that the secure digital (SD) card is properly inserted into the GPS.

How to Set the Software Navigation “Path”

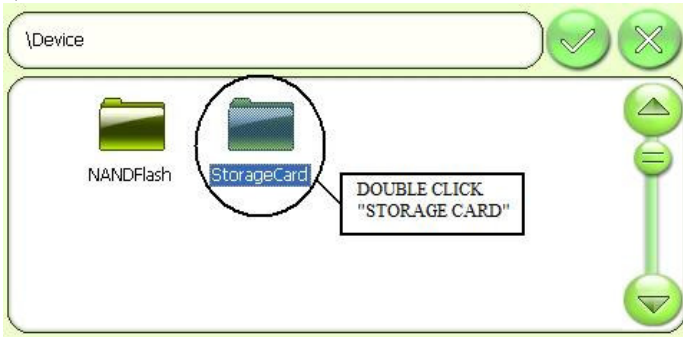
1)

2)

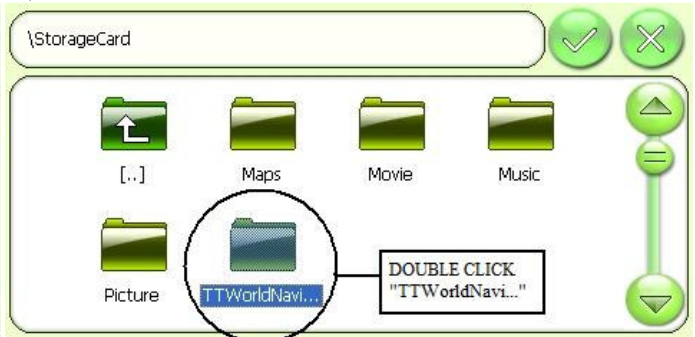
3)

4)

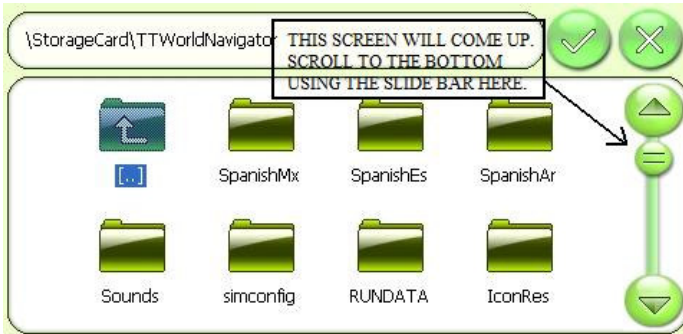
5)



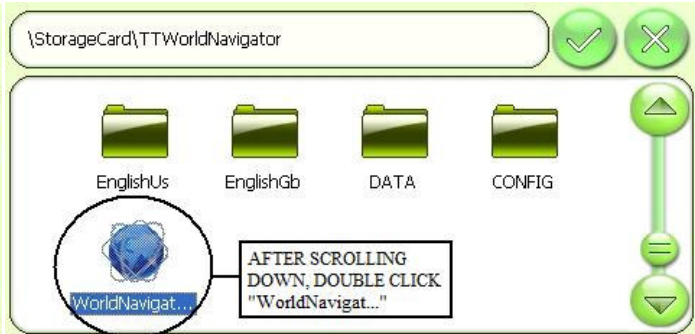
6)



7)



8)



9)



10)



11)



12)

