

Battery cover - back side of GPS Receiver

| Indicator | LED | Mode | Status |
|----------------------------|-------|----------|----------------------|
| Battery Power On/Off | Red | Blinking | Charging |
| | | On | Battery Full |
| | | Off | Power Off |
| Bluetooth | Blue | Blinking | Attempting to Pair |
| | | Solid | Link Complete |
| GPS | Green | Blinking | Acquiring Satellites |
| | | Solid | Position Fixed |

Power On - Use the power switch on the side of the GPS receiver. The Li-Ion rechargeable battery as already been inserted into the GPS receiver.

TELETYPE SIRF III 20-CHANNEL BLUETOOTH GPS RECEIVER

Product #2851 Series



About the Receiver

The Teletype 20-Channel Bluetooth GPS receiver is the perfect receiver for use in your car, plane or boat. This high performance receiver is designed for use with any Bluetooth-enabled device. This receiver features low power consumption, long battery life, wireless operation, rapid startup time, and high performance in typically challenging environments such as foliage and urban canyons.

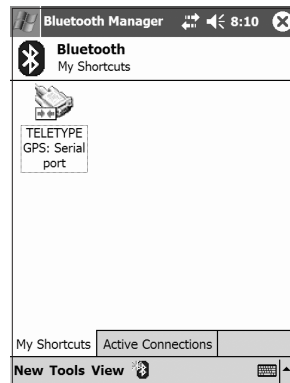


Teletype Co., Inc. 20 Park Plaza Park Plaza
Boston, MA 02120 42.352048 N 71.06832 W
www.teletype.com Tel: 617-542-6220

Intranet:2851v2 Bluetooth Receiver

INSTALLATION ON POCKET PC

1. Turn on your Pocket PC.
2. Turn on Bluetooth GPS receiver. (*see reverse for details*)
3. Open the Bluetooth Manager (usually found in the bottom right corner of your start-up screen, signified by a Bluetooth symbol).
4. Go to Tools > Paired Devices.
5. Select Add.
6. Click on the Find icon to the left of the Device field to explore the available Bluetooth devices in your environment.
7. Select the icon that is called TELETYPE.
8. Under the Passkey field, enter "0000" and select OK in the upper right corner.
9. The Pocket PC will authenticate the connection, and once connected, you will be brought back to the Paired Devices screen. Press OK to return to the Bluetooth Manager.
10. Go to New > Connect!
11. Select "Explore a Bluetooth device" and choose Next.
12. Tap under the Device box where you will see text "Tap here to choose a device." This will open a screen allowing you to choose a Bluetooth device within your surroundings.
13. Choose the TELETYPE icon (If you have followed the above steps, it will have a red check-mark on its icon).
14. On your next screen, select SPP slave under service selection, and under security, check the box to use a secure, encrypted connection (optional). Select Next. Under Service Selection highlight GPS OUTPUT.
15. You will now see a screen confirming a successful pairing.
16. Tap-and-hold on the TELETYPE Slave icon in your Bluetooth shortcuts, and select connect. Upon correct pairing, a green double-arrow will appear on the BT GPS icon. You have now paired your devices!
17. **[optional- use this only if you also bought TeleType GPS software]** Upon opening your TeleType program, choose your paired Bluetooth device. Open Tools > GPS Status, and observe the Satellites tab to see your the status of your position fix.



*Successfully paired
GPS receiver.*

OPERATING TIPS

1. Keep the GPS receiver still until the position is fixed the first time. Otherwise obtaining a fixed position will take longer.
2. If you are using this device in an airplane or a boat, position the receiver such that it does not interfere with the on board compass.
3. Environmental factors that may influence position accuracy and initial GPS position fix include:
 - Tall buildings
 - Narrow streets and passageways
 - Anti-glare protection film on windshield
 - Heavy foliage
 - Large cliffs
 - Obstructions where the satellite signals may be blocked
 - Poor satellite geometry situations
4. Date and time on your computer should be accurate to within one hour.
5. Select File > Exit to quit the GPS program properly.
6. Operating range for the GPS receiver is -10 to 60 (Celsius) or 14 to 140 (Fahrenheit).
7. If you've acquired an additional battery, you can charge it by placing it in the GPS receiver and applying AC power to the receiver.

WINDOWS MOBILE 5.0 INSTRUCTIONS ON LINE

www.teletype.com click on Technical Support, Documentation, Hardware Installation, Windows Mobile 5 Bluetooth Configuration (pdf).