

User Manual Addendum

# TeleType GPS

PocketTracker System

TeleType Part #1442

Revision 1.2

*Aug 1, 2002*

TeleType Co. Inc.

20 Park Plaza

Boston, MA 02116

1-617-542-6220

[www.teletype.com](http://www.teletype.com)

## **Introduction**

This documentation is an addendum to the TeleType GPS software manual. This document is intended for use by TeleType GPS software customers who have purchased the PocketTracker (part #1442). We will refer to this device as the “PocketTracker”. The PocketTracker allows you to track the location of another PocketTracker user or allow your position to be tracked. Currently the Pocket Tracker service is free with purchase of the hardware, but that is not guaranteed after October 2002.

## **Software Installation**

1. To monitor the position of a PocketTracker user or to have your position tracked, you will need to install the TeleType GPS software onto a Windows 98/NT/2000/XP computer (which we will refer to as the “desktop computer”) with internet access or a PDA running PocketPC 2000 or newer (which we will refer to as the “PDA”).
  - a) Insert the TeleType GPS CDROM into your CD drive.
  - b) An automatic splash screen will appear.
  - c) Select Install Program.
  - d) Select PC (for install onto the desktop computer) or PocketPC (for install onto the PDA) when prompted.
  - e) Follow the directions for installation as prompted by the installer. You can also refer to the TeleType GPS User Manual which can be found online or in the Gps folder on your hard drive.
2. Install the desired TeleType GPS maps from the CD to your hard drive.
  - a) Return to the splash screen.
  - b) Select the installation folder.
  - c) Select the state maps to install.
  - d) Click Install.
3. Activate the TeleType GPS program by double clicking the TeleType GPS program icon on your desktop computer or PDA.
4. Determine whether the user to be tracked has a static or dynamic IP address
  - a) Dynamic IP – The Internet address of the PDA or computer is not always the same. This is typically the case when connecting to the Internet over the phone line or with CDPD (Cellular Digital Packet Data or Wireless IP) services. Dynamic IP systems are used when the Internet Connection does not always have to be available.
  - b) Static IP – The Internet address of the PDA or computer is always the same. Static IP addresses are provided by some DSL and Cable Modem providers, and are often used in business networks.
5. Setup the user to be tracked using the Pocket Tracker system
  - For Dynamically Assigned IP Addresses**
    - a) Select Track, Pocket Track, Dynamic IP, and Setup.
    - b) Click ID.
    - c) Enter the User ID and Password provided when you purchased the Pocket Tracker software.
    - d) Click OK.
    - e) Click Exit.

f) Select Track, Pocket Track, Dynamic IP, and Keep Sending.

**For Static IP Addresses**

If you have a device with a static IP address, no setup is required.

4. Load the appropriate maps into the TeleType GPS program.
  - a) Click on the city or cities you would like to load maps for and select “Load Street Maps”

5. Enter the Pocket Tracker ID, Description, and Password for each user you wish to track

**For Dynamically Assigned IP Addresses**

- a) Select Track, Pocket Track, Dynamic IP, Setup.
- b) Click add and enter the ID for the PocketTracker user you wish to track.
- c) Enter the description of this user you wish to track. Note that you cannot have identical descriptions for two vehicles being tracked on the same computer or PDA.
- d) Enter the password for the ID. Your password has been assigned and is enclosed in your product shipment.
- e) Optionally, you can select a different icon for the user you wish to track, in order to differentiate between multiple Pocket Tracker users.
- f) Click OK.
- g) Click Modify, and select the ID of the user that was just added from the list
- h) Change the frequency of the position updates and the resolution of the updates.
- i) Click OK.
- j) Click Exit.
- k) Select Track, Pocket Track, Dynamic IP, and Start Tracking.

**For Statically Assigned IP Addresses**

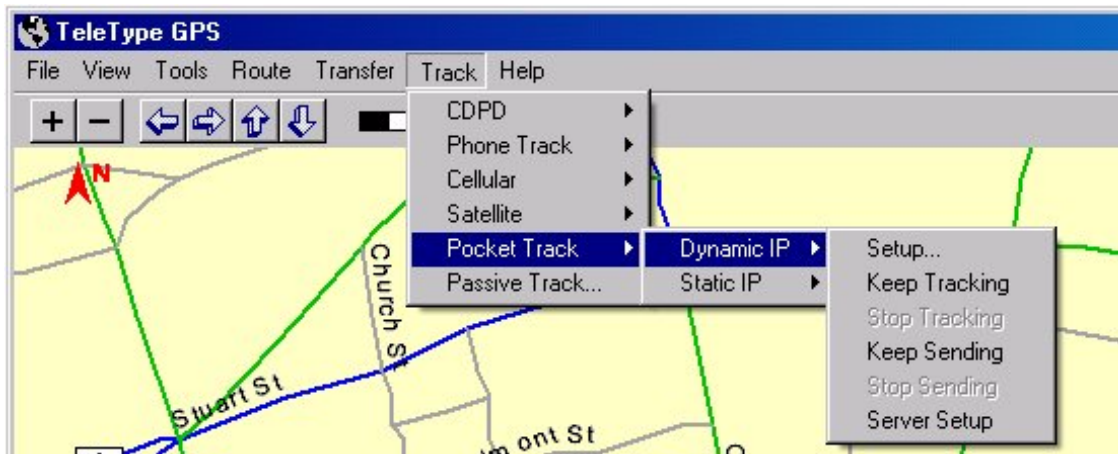
**Note** – Currently PocketPC devices can only manually track Static IP based Pocket Tracker users. To query their position, highlight the user and click on Query in the Pocket Tracker Setup window.

- a) Select Track, Pocket Track, Static IP, and Setup.
- b) Click add and enter the IP Address for the Pocket Tracker user you wish to track.
- c) Enter the description of this user you wish to track. Note that you cannot have identical descriptions for two vehicles being tracked on the same computer or PDA.
- d) Enter the password for the User. Your password has been assigned and is enclosed in your product shipment.
- e) Optionally, you can select a different icon for the user you wish to track, in order to differentiate between multiple Pocket Track users.
- f) Click OK.
- g) Change the frequency of the position updates and the resolution of the updates.
- h) Click OK.
- i) Click Exit.
- j) Select Track, Pocket Track, Static IP, and Start Tracking (PC Only).

6. In order to track the position of a PocketTracker user, both the user being tracked and the person doing the tracking must be connected to the Internet. In the case of a mobile user, CDPD service is recommended.

## ***TeleType GPS Pocket Tracker Menu Description***

The section above describes in detail how to set up the Pocket Tracker portion of the TeleType GPS software. Further detail is provided with the screen prints shown below.



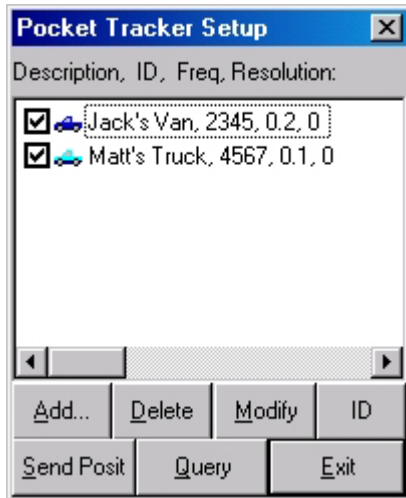
**Setup** – This will bring you to the setup screen described below.

**Keep/Stop Tracking** – These two menu options will turn on and off the tracking system. Once one or more users are being tracked, “Stop Tracking” will be highlighted and “Keep Tracking” will not be highlighted.

**Keep/Stop Sending** – This is for use by the Pocket Track user being tracked. Selecting “Keep Sending” would turn on the Pocket Tracker system and allow the user to be tracked. “Stop Sending” would turn off the Pocket Tracker system.

**Server Setup** – This is for entering the Pocket Tracker server address. The address of this server is [teletype.servftp.com](http://teletype.servftp.com)

**Note** – *If you open the Waypoint window tracking of any users will be suspended until the window is closed again.*



Use the Pocket Tracker Setup window to configure the Pocket Tracker system. Each line with a check in the box will be tracked by the software.

**Add** - Allow you to add an additional Pocket Tracker user for the system to track. See the setup instructions for how to add a user.

**Delete** – Delete a user from the list.

**Modify** – Modify the information for the selected user. This will allow you to change the description of a user, the frequency of the updates on their position, and the resolution of their position.

**ID** – Set the ID and Password of the user so that they can be tracked.

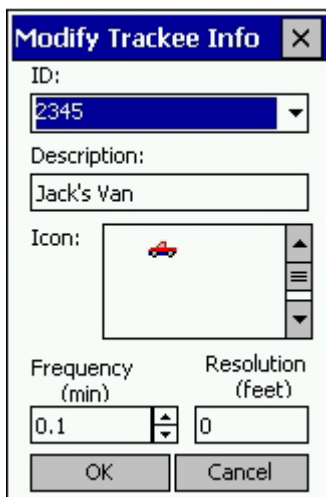
**Send Posit** – Send your current position to the server.

**Query** – Query the position of the currently highlighted user.

**Exit** – Exit this window.



This is the screen as it appears on the PDA. Multiple vehicles can be listed on this screen, but only the currently highlighted vehicle will actually be tracked when the window is closed. Each line shows the icon, the description, the ID number, the frequency of position requests, and the resolution.



This is the window for modifying the tracking settings of a Pocket Tracker user.

**ID** – Drop-down list of all of the currently entered IDs in the program.

**Description** – Description of the vehicle or person being tracked.

**Icon** – List of different icons to choose from for each ID.

**Frequency** – How often the position of the ID will be checked.

**Resolution** – Determines if a new waypoint will be created if the position has not changed by this amount. If the distance traveled between position checks is less than this number, no new waypoint will be created. Avoids the creation of multiple waypoints when the vehicle or person is stationary.