

INSTALLING TELETYPE GPS BLUETOOTH RECEIVER ON THE SPRINT PPC-6700



Installation Guide

Product # 2151 and 2951



Teletype Co., Inc.
20 Park Plaza Park Plaza, Boston, MA 02116
www.teletype.com
Tel: 617-542-6220
Live Chat Assistance: www.teletype.com/chat

Description:

TeleType GPS now supports the Sprint PPC-6700 Pocket PC Phone. This Pocket PC Phone combo works great with the [TeleType GPS 16 Channel Receiver and TeleType GPS Pro software](#)! Route quickly using the i730's built in QWERTY keyboard! This document provides instructions on how to install your TeleType Bluetooth GPS receiver on the Sprint PPC-6700. This installation guide can also be used for installing a TeleType GPS Bluetooth receiver on a Pocket PC running Windows Mobile 5.0, such as a Dell Axim x51, or x51v.

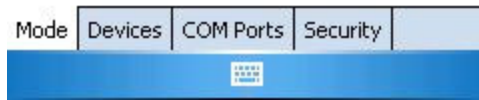
Installing TeleType Bluetooth GPS Receiver On Sprint PPC-6700:

1. Turn on the Sprint PPC-6700.
2. Attach the GPS receiver to the 12v cigarette power adapter. Note that the GPS receiver must be POWERED in order to function.
3. On the Sprint PPC-6700 start screen, press the Start Menu. Go to **Settings**.
4. Click on the Connections tab.



Settings – Connections Tab

5. Click on the Bluetooth icon.
6. Click on the Mode tab and make sure that “Turn Bluetooth On” is checked off.



Turning Bluetooth On

7. Click on the Devices tab and click “New Partnership”.



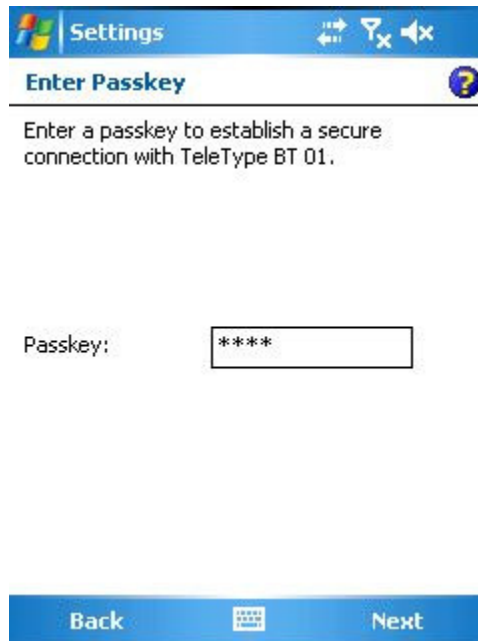
Adding a New Bluetooth Device

8. Select “TeleType BT 01” to connect to the TeleType Bluetooth Receiver. Press Next.



Selecting the TeleType Bluetooth Device

9. Enter '0000' for the passkey and press Next.



Entering Passkey

10. Select the service "Serial Port" and press Finish.



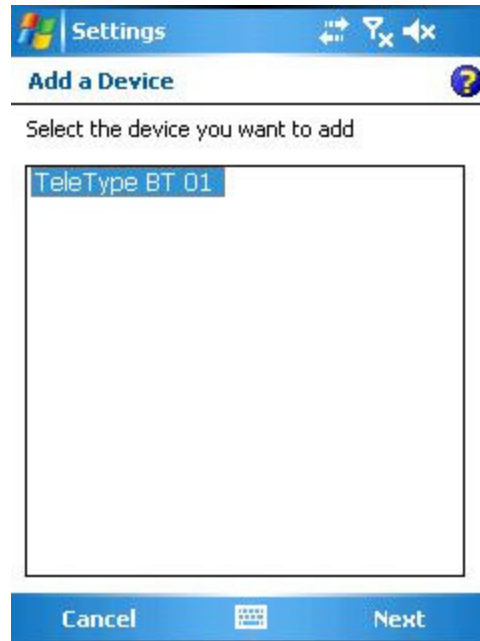
Selecting Bluetooth Service

11. Click on the Com Ports tab, and then click on “New Outgoing Port”.



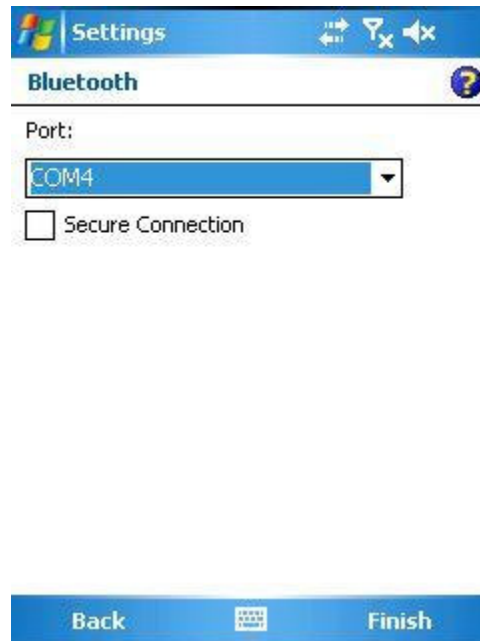
Com Ports tab

12. Select the newly added TeleType Bluetooth GPS Receiver, and press “Next”.



New Outgoing Port

13. Under "Port", select "Com4" and press "Finish". Make sure that you do not check "Secure Connection".

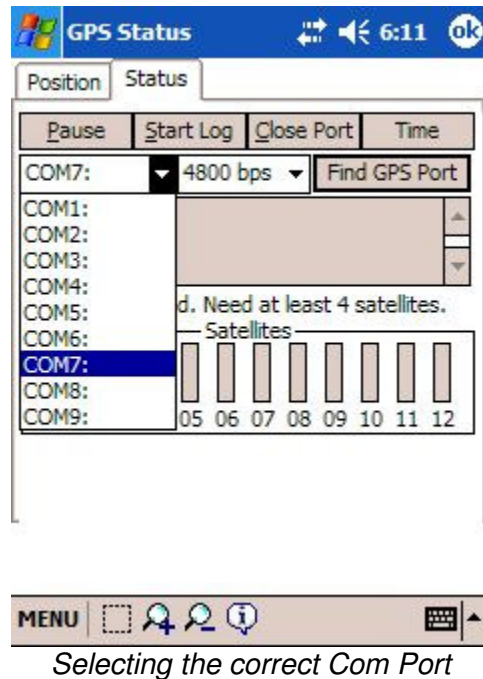


Choosing the GPS Port

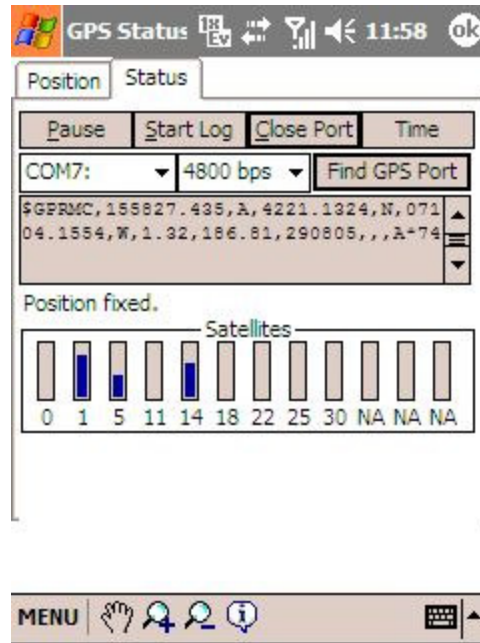
14. The GPS port has now been added. Close the Bluetooth Manager, and open the TeleType GPS application.
15. Go to **MENU > GPS**.



16. Click on the “Status” tab. Select “Com4” for the port, and “4800 bps” for the baud rate. Press the “Open Port” button.



17. In a few moments, the GPS receiver will lock into your position.



GPS position fixed

18. Press the “ok” button and your position will be located as a red arrow or red car on the screen.



Position shown on TeleType application

Operating Tips:

1. Keep the GPS receiver still until the position is fixed the first time. Otherwise obtaining a fixed position will take longer.
2. The performance of the GPS receiver is affected by the weather and the surrounding environment. Locking in your position may take longer under the following circumstances:
 - a. Cars, boats and planes equipped with solar control filmed windows
 - b. Among high buildings, under bridges or tunnels
 - c. Under high voltage cables or nearby radio wave sources, such as mobile phone base stations
 - d. Bad weather

In any of these cases, you are suggested to:

- a. Move the receiver to another location
 - b. Move to an open space
 - c. Move away from the sources of interferences
 - d. Wait until the weather condition is improved
3. Date and time on your Sprint PPC-6700 should be accurate to within one hour.
 4. Select **MENU > Exit** to quit the GPS program properly.
 5. The GPS can function only when power is supplied.

Note: GPS functions may be slower when making or receiving a call.