

INSTALLING TELETYPE GPS BLUETOOTH FOR WINDOWS MOBILE 5.0 PDA'S



Installation Guide

Product # 2151 and 2951



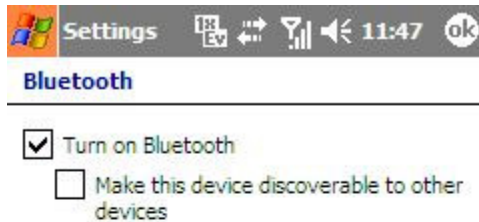
Teletype Co., Inc.
20 Park Plaza Park Plaza, Boston, MA 02116
www.teletype.com
Tel: 617-542-6220
Live Chat Assistance: www.teletype.com/chat

Description:

TeleType GPS now supports Windows Mobile 5.0 devices such as the Samsung i730, Treo 700w, Dell Axim x51, and x51v. These Pocket PCs with integrated phone work great with TeleType GPS Pro software and Bluetooth receivers. This installation guide provides instructions on how to install your TeleType Bluetooth GPS receiver on a device running Windows Mobile 5.0.

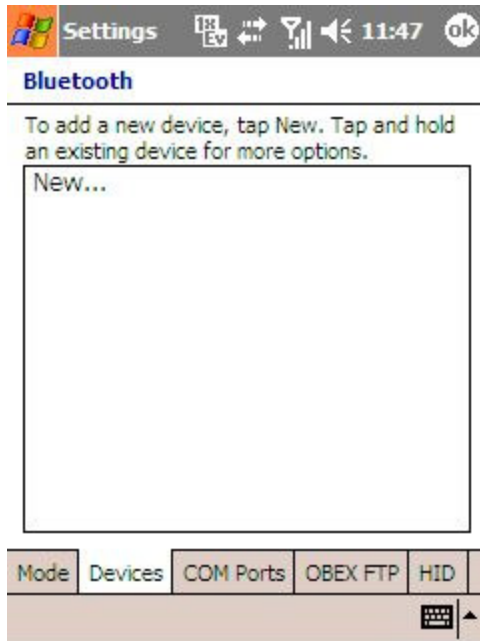
Installing the TeleType Bluetooth GPS Receiver On Your PDA:

1. Turn on your PDA.
2. Attach the GPS receiver to the 12v cigarette power adapter. Note that the GPS receiver must be POWERED in order to function.
3. On the PDA start screen, click on the Bluetooth icon.
4. Click on the Mode tab, and make sure that "Turn on Bluetooth" is checked off.



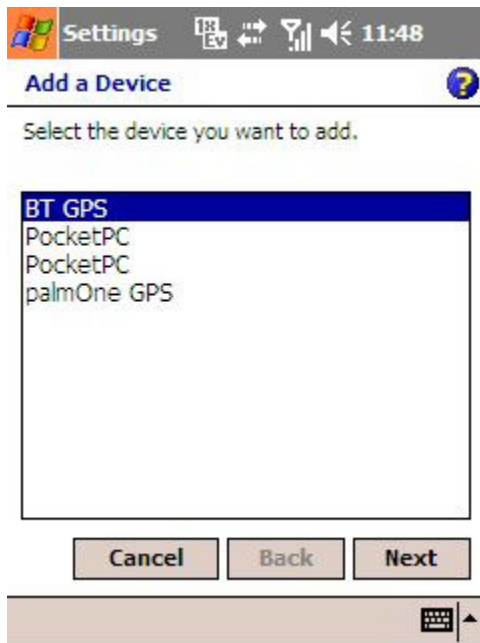
Bluetooth turned on

5. Click on the Devices tab, and click "New...".



Adding a new Bluetooth device

6. Select "BT GPS" to connect to the TeleType GPS Bluetooth receiver.



Selecting TeleType GPS receiver

7. Enter the the appropriate device passkey based on the specific receiver you are using.
 - a) Enter '0000' for TeleType 16 Channel (part #2151) receiver.
 - b) Enter '6268' for TeleType Mini Bluetooth (part #2951) receiver.



Enter a passkey to establish a secure connection with BT GPS.



Entering Passkey

8. A screen will prompt you about using your Bluetooth receiver for ActiveSync. Click "No".



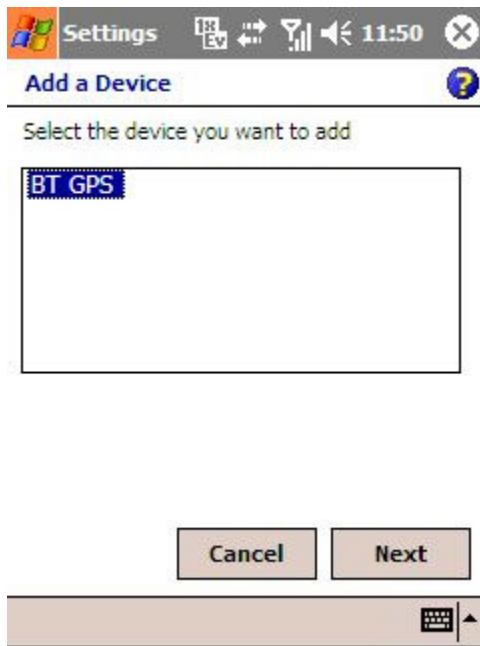
ActiveSync question

9. You may enter a name for the Bluetooth receiver if you wish. Type the name you wish to name your Bluetooth receiver, or leave as is.
10. Your new Bluetooth receiver has been added to your PDA as a Bluetooth device.
11. Click on the Com Ports tab, and then click on "New Outgoing Port".



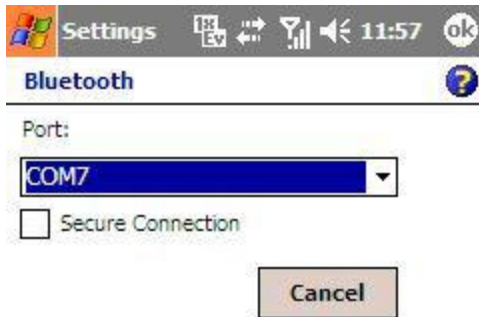
Com Ports tab

12. Select the newly added TeleType Bluetooth GPS Receiver, and press “Next”.



New Outgoing Port

13. Under “Port”, select “Com 7” and press “Next”. Make sure that “Secure Connection” is not checked off.



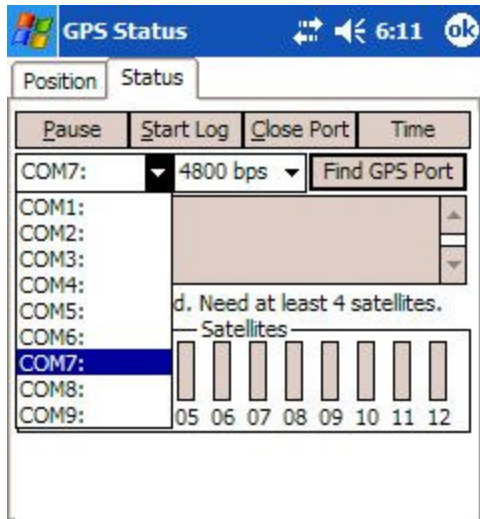
Choosing the GPS Port

14. The GPS port has now been added. Close the Bluetooth Manager, and open the TeleType GPS application.
15. Go to **MENU > GPS**.



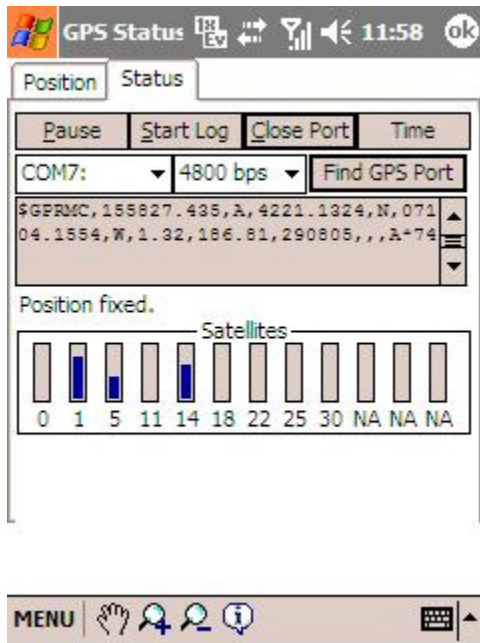
TeleType Menu

16. Click on the “Status” tab. Select “Com7” for the port, and “4800 bps” for the baud rate. Press the “Open Port” button.



Selecting the correct Com Port

17. In a few moments, the GPS receiver will lock into your position.



GPS position fixed

18. Press the “ok” button and your position will be located as a red arrow or red car on the screen.



Position shown on TeleType application

Operating Tips:

1. Keep the GPS receiver still until the position is fixed the first time. Otherwise obtaining a fixed position will take longer.
2. The performance of the GPS receiver is affected by the weather and the surrounding environment. Locking in your position may take longer under the following circumstances:
 - a. Cars, boats and planes equipped with solar control filmed windows
 - b. Among high buildings, under bridges or tunnels
 - c. Under high voltage cables or nearby radio wave sources, such as mobile phone base stations
 - d. Bad weather

In any of these cases, you are suggested to:

- a. Move the receiver to another location
 - b. Move to an open space
 - c. Move away from the sources of interferences
 - d. Wait until the weather condition is improved
3. Date and time on your PDA should be accurate to within one hour.
4. Select **MENU > Exit** to quit the GPS program properly.
5. The GPS can function only when power is supplied.

Note: GPS functions may be slower when making or receiving a call.